

STIMACMP



Specifications

Physical Characteristics

Size: 7.6" H x 8.5" W x 9.2" L

Weight: 8.8 pounds

Printer

Print Method: Direct thermal, fixed head

Print Speed: 10" per sec. maximum

Resolution: 203 dpi (8 dots/mm); 304 dpi (12 dots/mm)

Ticket Separation: Tear-off

Display: LED indicator

Sensors: Fully adjustable top and bottom black mark / gap / notch detectors, paper presence sensors, head temperature sensor, cover open sensors

Media

Media Type: Fanfold, thermal rolls, wristbands

Paper Width: 0.75" to 3.25"

Paper Thickness: max. 0.016"

Paper Weight: 70 - 255 g/m²

Interface

Standard: USB, Serial (RS232) and Ethernet

Optional: Wifi dongle, Bluetooth dongle

Emulations

ESC/POS, SVELTA, FGL

Graphics

JPEG, PNG, BMP, PCX, FGL

Software

Self-installing Windows driver, Mac OS X driver (C.U.P.S.), Linux driver (C.U.P.S.) 32/64 bit compatible

Android / iOS SDK available

Status Monitor

Font Editor, Logo Editor

Virtual COM/USB SW emulator

EasyMyfare SW to read/write MIFARE tags

Web Interface

Web Embedded Server allows users to perform remote setup, maintenance and performance analysis

Remote logo and font uploading

Real-time status monitor

Email notifications

Memory

RAM: up to 32MB

Flash: 32MB

Expansion slot: SD/MMC, max. 2GB

Graphic: Dynamic logo management (max 2MB graphic memory)

Data Buffer: 64 KB

Fonts

True Type / Windows / Soft font support for any language

Character set: PC437, PC850, PC860, PC863, PC865, PC858

Barcodes

1D symbologies: UPC-A, UPC-E, EAN13, EAN8, CODE39, ITF, CODABAR, CODE93, CODE128, CODE32

2D symbologies: PDF417, DATAMATRIX, AZTEC, QR CODE

Electrical Specifications

Power Supply: 24 Vdc \pm 10%

Voltage: Auto Range, 90-132 VAC & 190-264 VAC

Current (output): 4.17 A

Frequency: 47 Hz to 63 Hz

Power: 100 W

Environmental Specifications

Operating Temperature: 0 to 50°C

Relative Humidity: 10% to 85%

Storage Temperature: -20 to 70°C

MTBF

Printer: 84,080 hours

Print Head: 100 KM / 1 million pulses

Warranty

Printer: 2 years, parts and labor

Print head: 2 years

Free lifetime print head replacement when using Stimare paper

Options

RFID reader/writer

UF RFID and standard UHF supported: UltraLight RFID, Mifare and optional I-code, RFID ISO 14443 A/B/B'; ISO 14444, Felica, ISO18092 (NFC), optional Mifare, RFID UHF Multi Protocol

Triple Feeder

Print with three different ticket types.

Veriprint®

Print head with embedded scanner to record a copy of issued tickets in real time.

Barcode Reader

Internal barcode reader to validate tickets with pre-printed barcodes.

Scan rate: 200 scans/sec

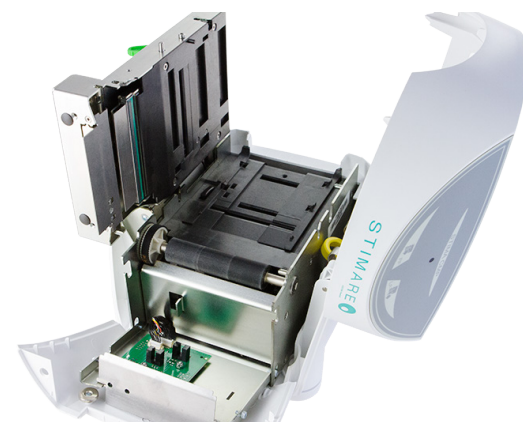
Sensor: Liner CCD sensor

Light source: Red Lens, 630 nm

Readable barcodes: ALL UPC/EAN/JAN, Code 39, Code 39 Full ASCII, Code 128, Code 93, Interleave 25, Industrial 25, Matrix 25, China Postage, CODABAR/NW7, Code 11, MSI/PLESSEY, Code 32

Accessories

Ticket Safe: Ticket Safe with lock and key and 4x foot extenders.



CE RoHS